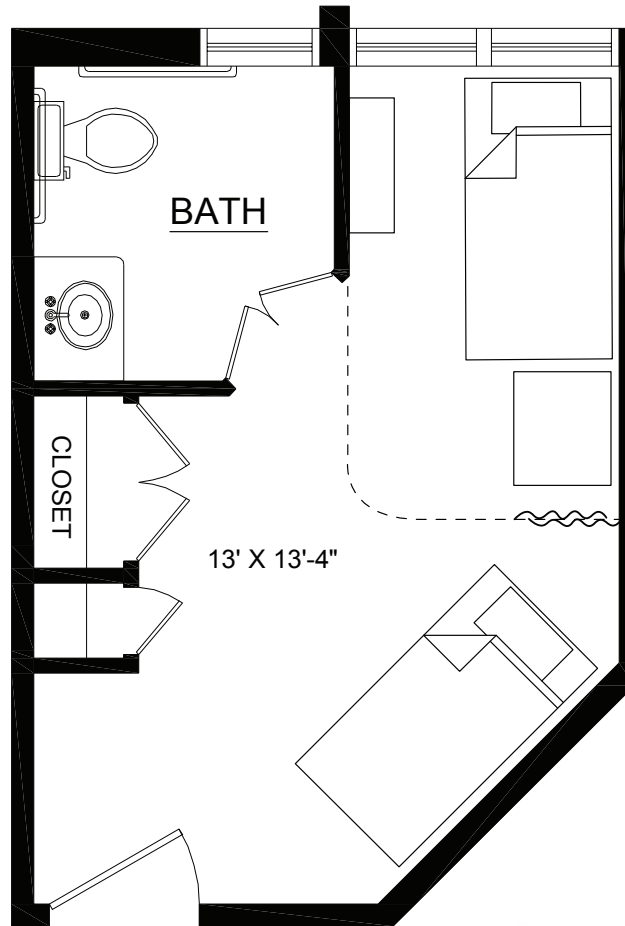


Christopher Center Semi-Private Memory Care Apartment

227 square feet



Our Lady of Hope
HEALTH CENTER

804-360-1960 | ourladyofhope.com | 13700 North Gayton Road | Richmond, VA 23233
Sponsored by the Catholic Diocese of Richmond.



Coordinated Services Management – Professional Management of Retirement Communities since 1981

